

Digital Digression



A L P H A B E T

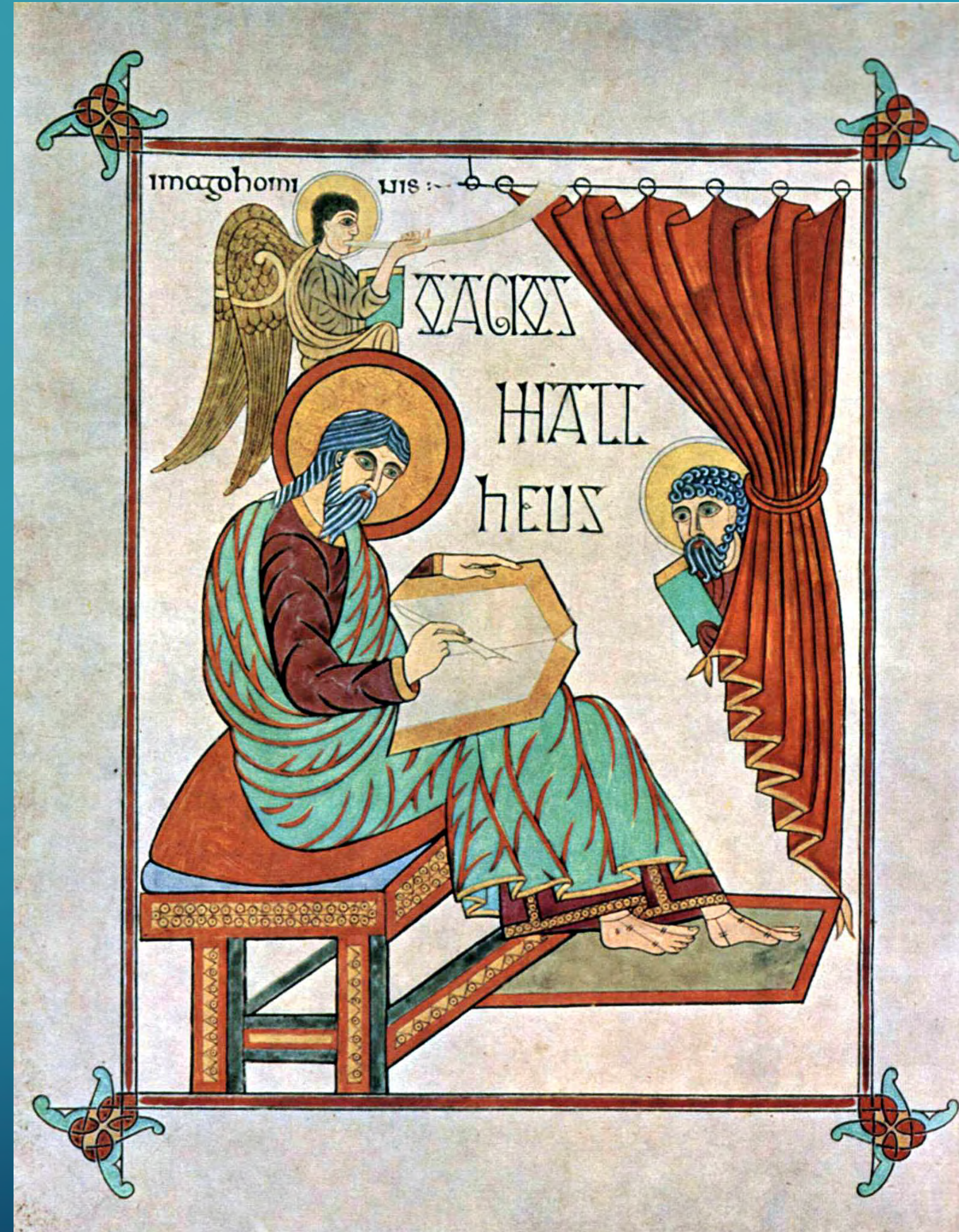


abcdefghijklmnopqrstuvwxyz

OCR and TEXT

Tony Wright
August 2020

A L P H A B E T



abcdefghijklmnopqrstuvwxyz

A L P H A B E T

Optical character recognition (OCR) software converts pictures, or even handwriting, into text

OCR software analyse a document and compare it with fonts stored in their database and/or by noting features typical to characters

a b c d e f g h i j k l m
n o p q r s t u v w x y z

ABBYY FineReader 9.0 Sprint

Overview

Features

Compare Versions

FAQ

Where to buy?

Tech Specs

ABBYY FineReader Sprint is a one-click OCR and conversion utility that instantly turns your paper documents into various electronic formats, including Microsoft® Word, Excel® and searchable PDF. FineReader Sprint accurately reads documents in up to 179 languages and precisely preserves original document's layout and formatting. This easy-to-use OCR tool reduces the need of retyping and paper storage.

FineReader Sprint is designed for basic OCR tasks. If you are looking for a professional OCR solution with advanced functionality, including PDF conversion, 2nd generation of ABBYY ADRT®, integration with the latest Microsoft Office, WYSIWYG text editor, spell checker and task automation, then new [ABBYY FineReader 14](#) will be the best choice for you.

Key Features

- Convert paper document into popular formats
- Superior recognition accuracy & layout retention
- One-click smart conversion for easy access
- Integration with Microsoft Office applications

[Learn more >](#)

What is OCR?

- What exactly is meant by OCR?
- What Technology lies behind OCR?
- What Principles is FineReader OCR Based On?
- Recognition of Digital Camera Images
- How to use OCR Software?

[Learn more >](#)

For Mac users

ABBYY FineReader Sprint 8.0 Mac Edition significantly expands functional opportunities of Macintosh users. It recognizes documents written in 171 languages and is a convenient OCR solution for instant processing of different documents.

[Learn more >](#)

A

L

P

H

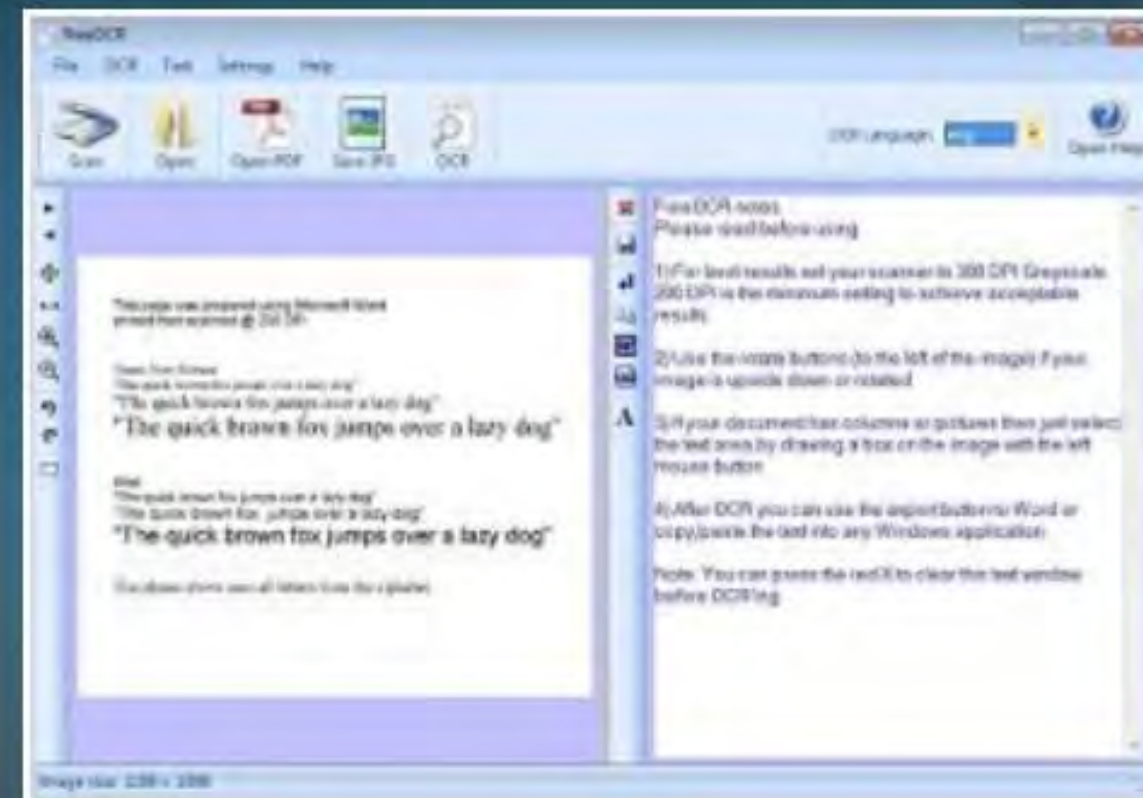
A

B

E

T

FreeOCR

[Home Page](#)[Downloads](#)[Languages](#)[Online Help](#)

Scanning OCR Software

Latest release: March 2015 v5.4

Totally free OCR software for Microsoft Windows

Import Directly from Twain scanners, PDF and popular image formats



About FreeOCR

FreeOCR is a free Optical Character Recognition Software for Windows and supports scanning from most Twain scanners and can also open most scanned PDF's and multi page Tiff images as well as popular image file formats. FreeOCR outputs plain text and can export directly to Microsoft Word format.

abcdefghijklmnopqrstuvwxyz

A L P H A B E T

Scan and convert paper document

Superior recognition accuracy

Retain document structure and layout

Conversion of photos

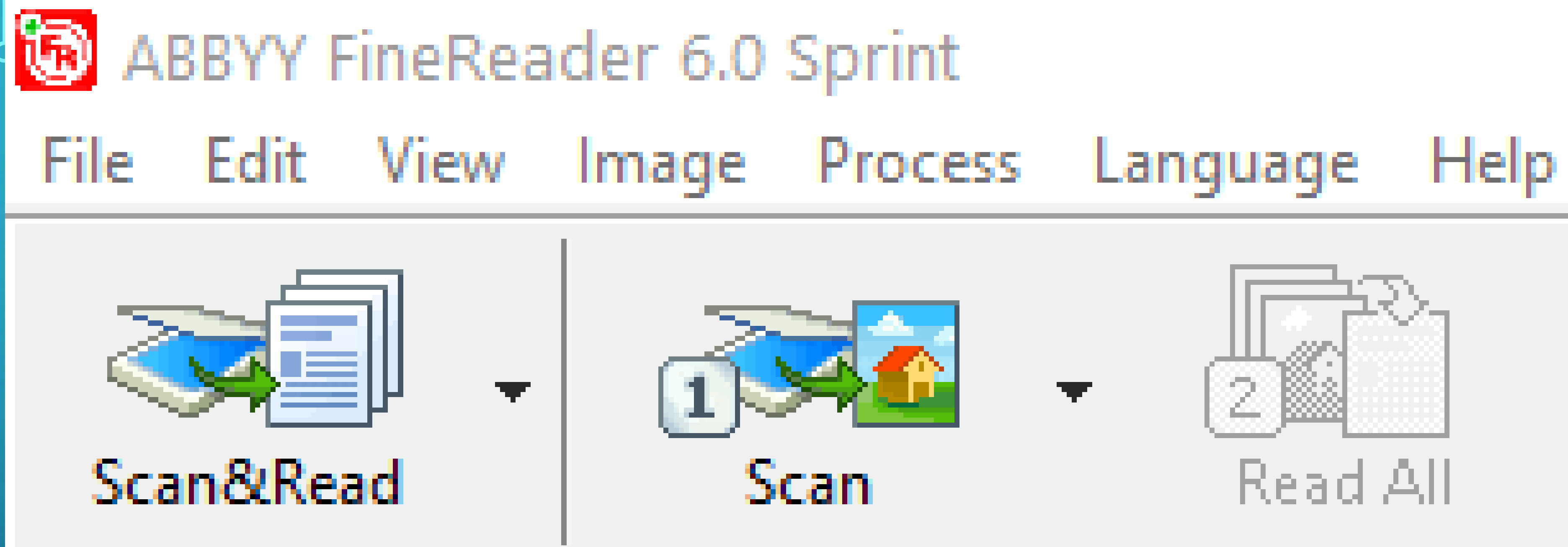
FineReader Sprint lets you send the results into Microsoft Word and Excel, or as an email attachment in Outlook

Bonus application - ABBYY Screenshot Reader

An instant on-screen capture tool lets you easily capture the information on the screen, save it as a file, attach in an email or turn into editable Word and Excel file

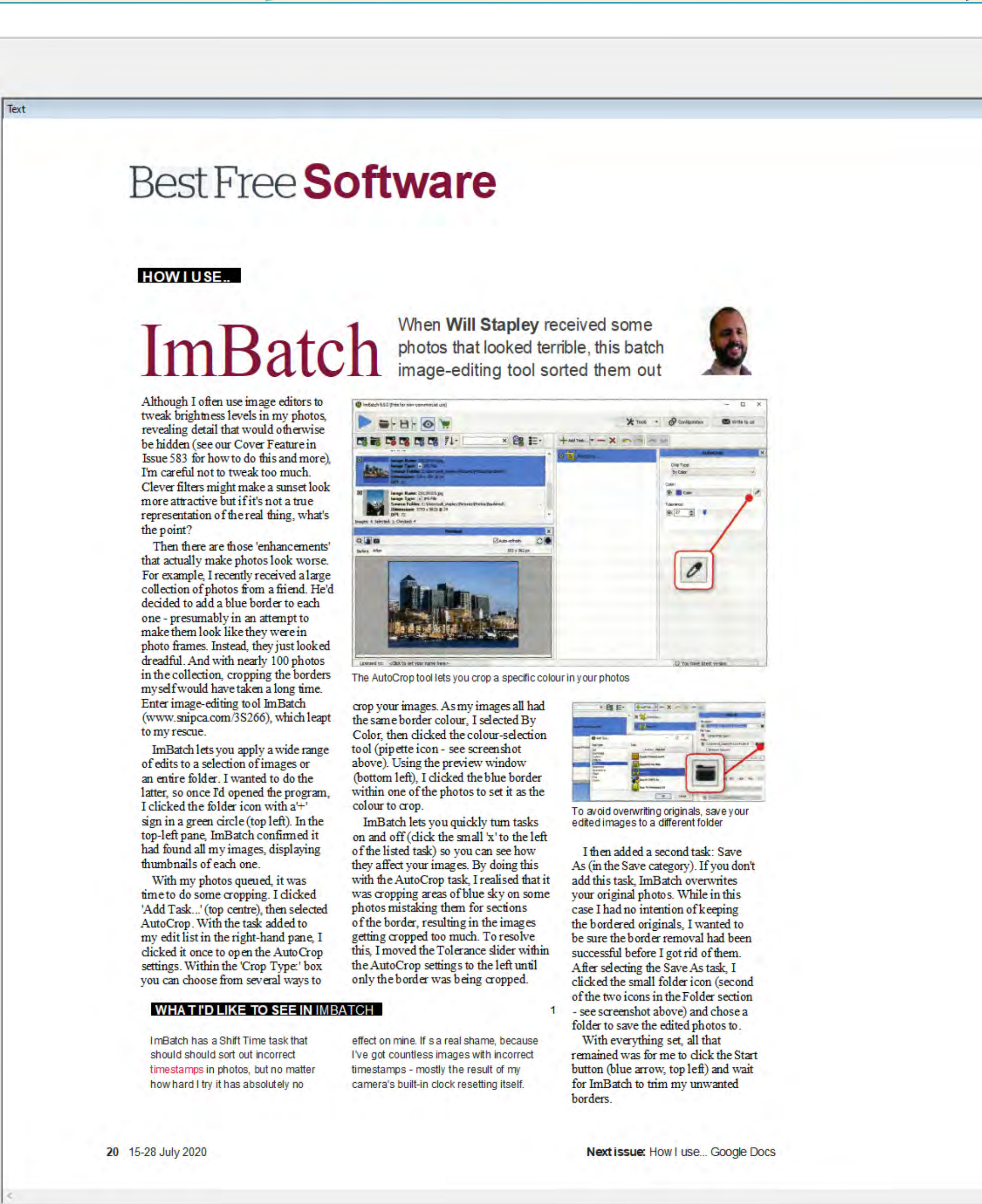
abcdefghijklm
nopqrstuvwxyz

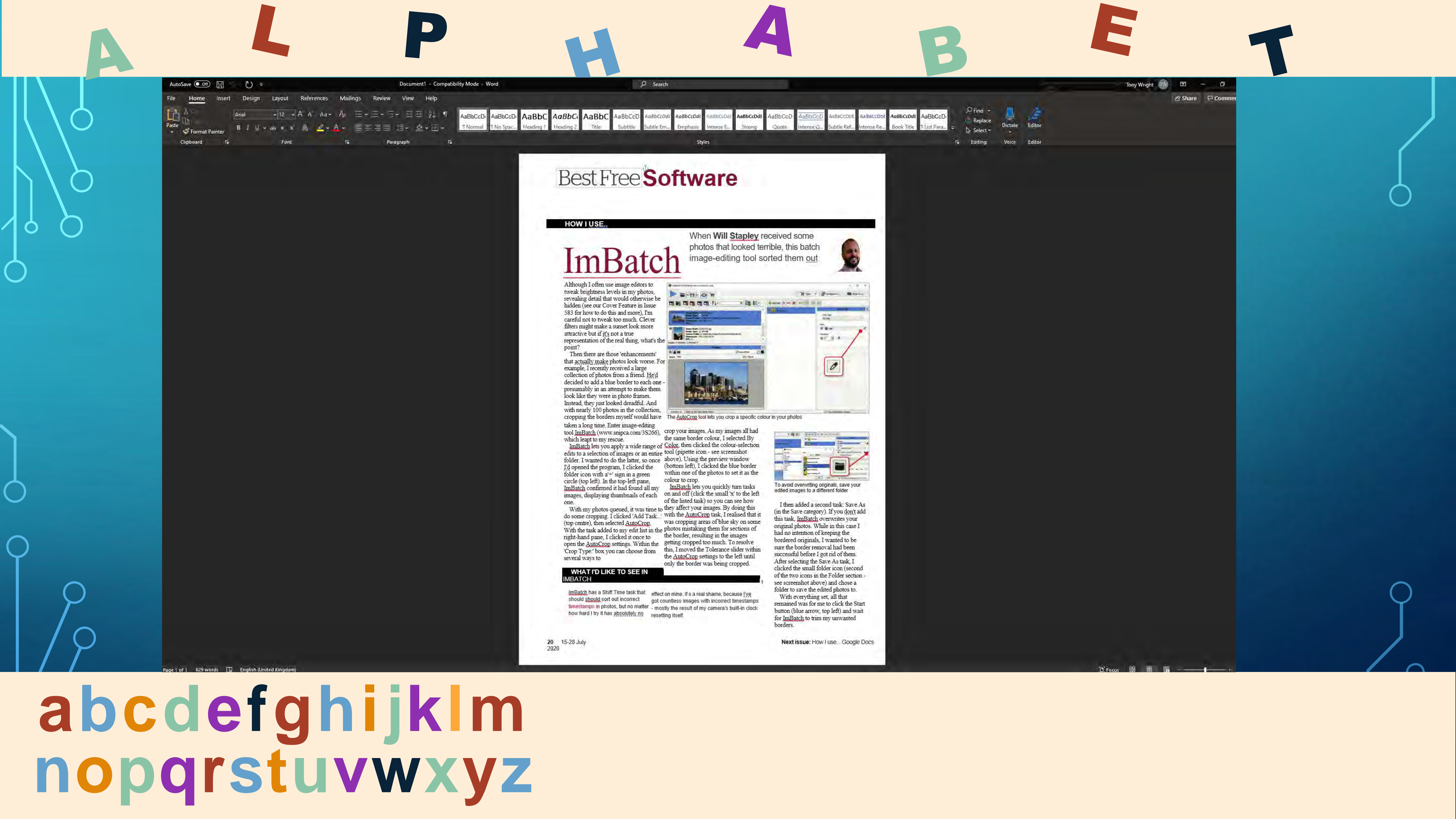
A L P H A B E T



Activates Normal Epson Scanner Interface

abcdefghijklmnop
nopqrstuvwxyz





AutoSave  Off   

Document1 - Compatibility Mode - Word

Search

Tony Wright

Share Comment

FileHomeInsertDesignLayoutReferencesMailingsReviewViewHelp

Paste 

Clipboard

Font

Paragraph

Styles

Editing

Voice

Editor

Find > Replace > Select > Dictate > Editor

Best Free Software

HOW I USE...

ImBatch

When Will Stapley received some photos that looked terrible, this batch image-editing tool sorted them out

Although I often use image editors to tweak brightness levels in my photos, revealing detail that would otherwise be hidden (see our Cover Feature in Issue 583 for how to do this and more). I'm careful not to tweak too much. Clever filters might make a sunset look more attractive but if it's not a true representation of the real thing, what's the point?

Then there are those 'enhancements' that actually make photos look worse. For example, I recently received a large collection of photos from a friend. He'd decided to add a blue border to each one - presumably in an attempt to make them look like they were in photo frames. Instead, they just looked dreadful. And with nearly 100 photos in the collection, cropping the borders myself would have taken a long time. Enter image-editing tool ImBatch (www.snipca.com/3S266), which leapt to my rescue.

ImBatch lets you apply a wide range of edits to a selection of images or an entire folder. I wanted to do the latter, so once I'd opened the program, I clicked the folder icon with a '+' sign in a green circle (top left). In the top-left pane, ImBatch confirmed it had found all my images, displaying thumbnails of each one.

With my photos queued, it was time to do some cropping. I clicked 'Add Task...' (top centre), then selected 'AutoCrop'. With the task added to my edit list in the right-hand pane, I clicked it once to open the AutoCrop settings. Within the 'Crop Type' box you can choose from several ways to

crop your images. As my images all had the same border colour, I selected By Color, then clicked the colour-selection tool (pipette icon - see screenshot above). Using the preview window (bottom left), I clicked the blue border within one of the photos to set it as the colour to crop.

ImBatch lets you quickly turn tasks on and off (click the small 'x' to the left of the listed task) so you can see how they affect your images. By doing this with the AutoCrop task, I realised that it was cropping areas of blue sky on some photos mistaking them for sections of the border, resulting in the images getting cropped too much. To resolve this, I moved the Tolerance slider within the AutoCrop settings to the left until only the border was being cropped.

WHAT I'D LIKE TO SEE IN IMBATCH

ImBatch has a Shift Time task that should should sort out incorrect timestamps in photos, but no matter how hard I try it has absolutely no effect on mine. It's a real shame, because I've got countless images with incorrect timestamps - mostly the result of my camera's built-in clock resetting itself.

To avoid overwriting originals, save your edited images to a different folder

I then added a second task: Save As (in the Save category). If you don't add this task, ImBatch overwrites your original photos. While in this case I had no intention of keeping the bordered originals, I wanted to be sure the border removal had been successful before I got rid of them. After selecting the Save As task, I clicked the small folder icon (second of the two icons in the Folder section - see screenshot above) and chose a folder to save the edited photos to.

With everything set, all that remained was for me to click the Start button (blue arrow, top left) and wait for ImBatch to trim my unwanted borders.

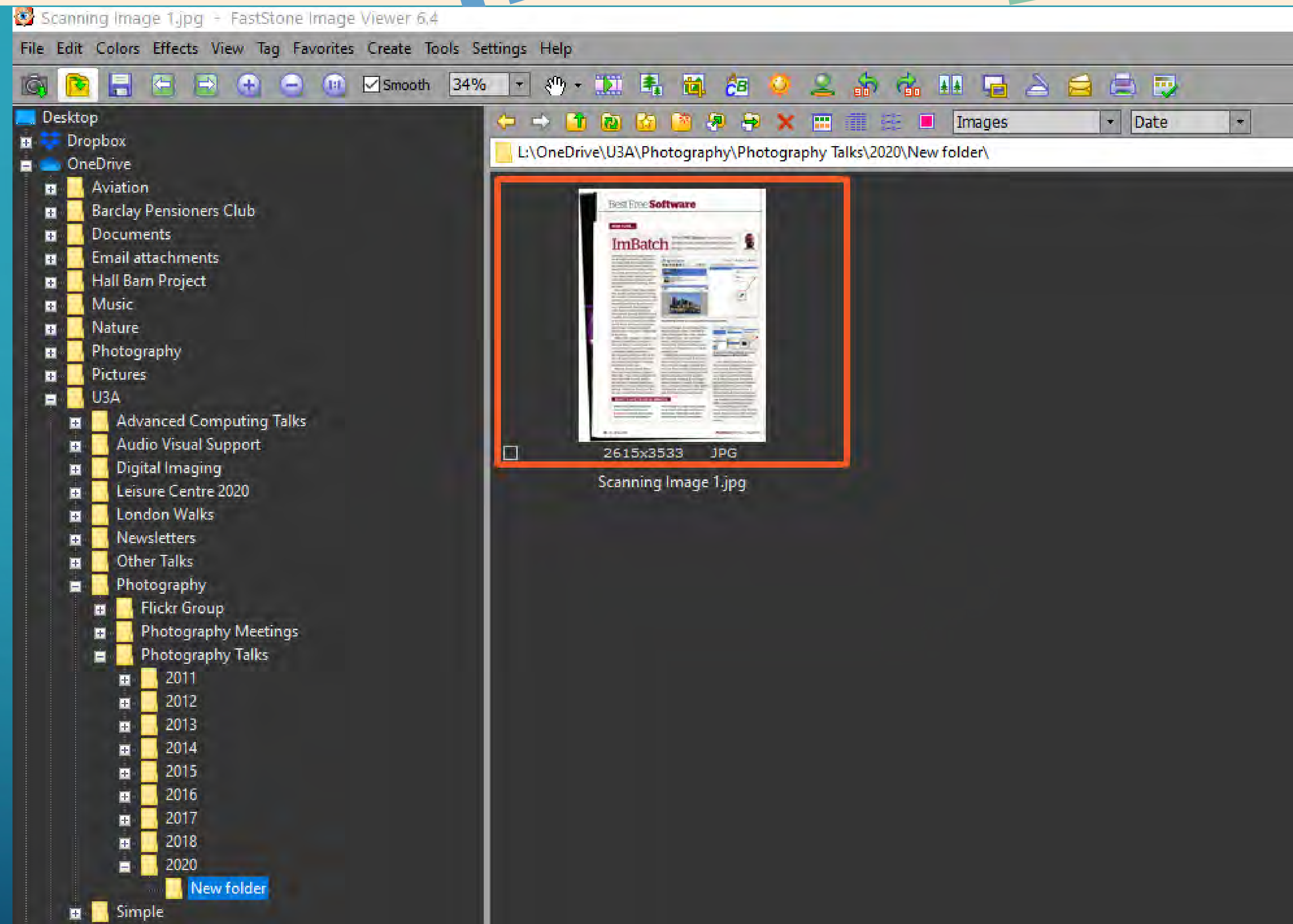
Next issue: How I use... Google Docs

Page 1 of 1

629 words

English (United Kingdom)

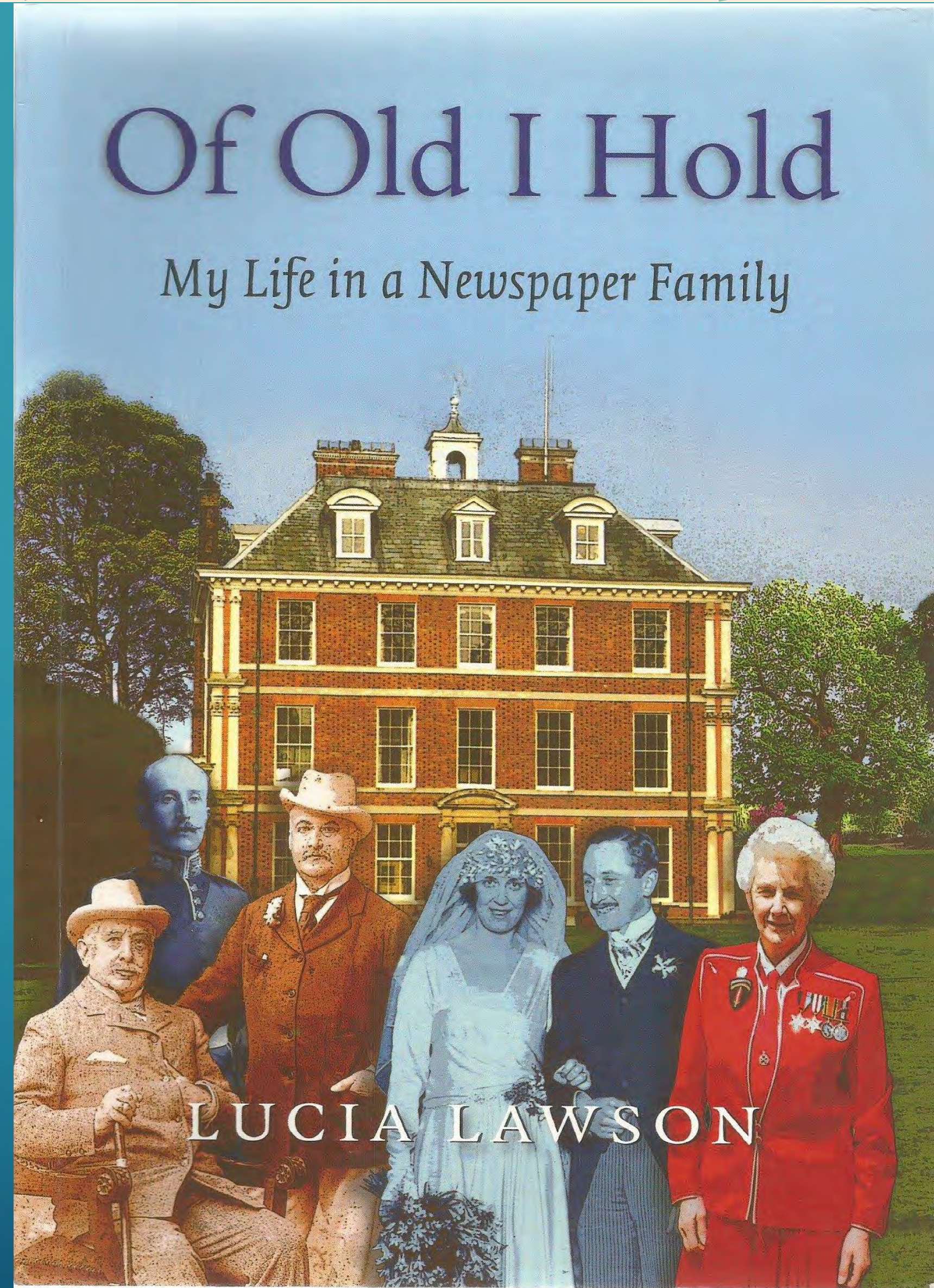
A L P H A B E T



a b c d e f g h i j k l m
n o p q r s t u v w x y z

A L P H A B E T

Multiple Pages



Boyder Cuper was in service with Thomas Howard's great-grandson, th Duke of Norfolk, whose father



had pulled down Arundel House when they were given to him. The statues were originally brought to England by the 2nd Earl of Arundel, who had taken a fancy to Grecian sculptures and commissioned the Rev William Perry to go to Athens and Turkey to purchase statuary.

Every path or ride is designed to end in a statue or temple: the main ones running from the south end of the lake where Aesulapeus (called 'Old Tom Tredde' by the workmen) stands to the Temple of Venus and from there to the obelisk at the edge of the grove. The latter was built to celebrate the completion of the work. It bears the

abcdefghijklm
nopqrstuvwxyz

A L P H A B E T

Type Mask Tool



“Smudge Script” Lettering Technique



a b c d e f g h i j k l m
n o p q r s t u v w x y z

A L P H A B E T

DEMO TIME

a b c d e f g h i j k l m
n o p q r s t u v w x y z